

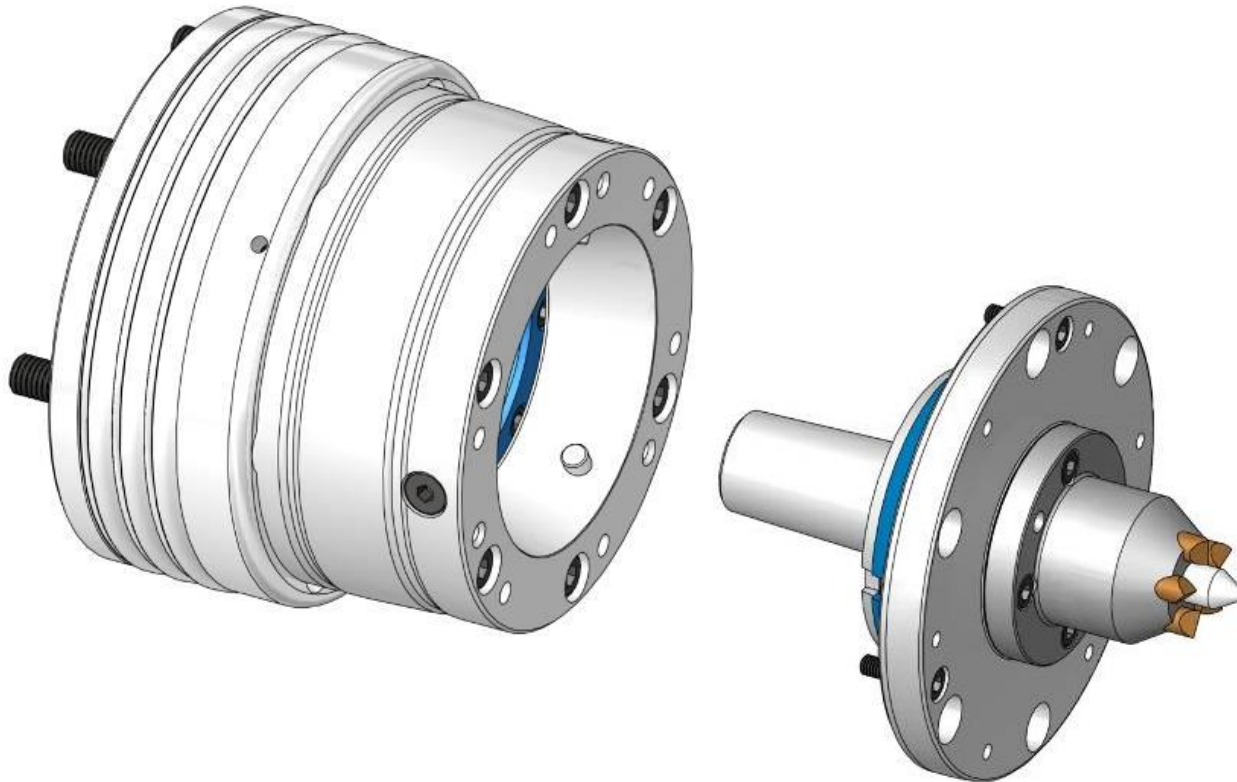
Face Driver Adapt

spring-loaded centered

Adaptions for chucks

Maximum flexibility – short change-over time:

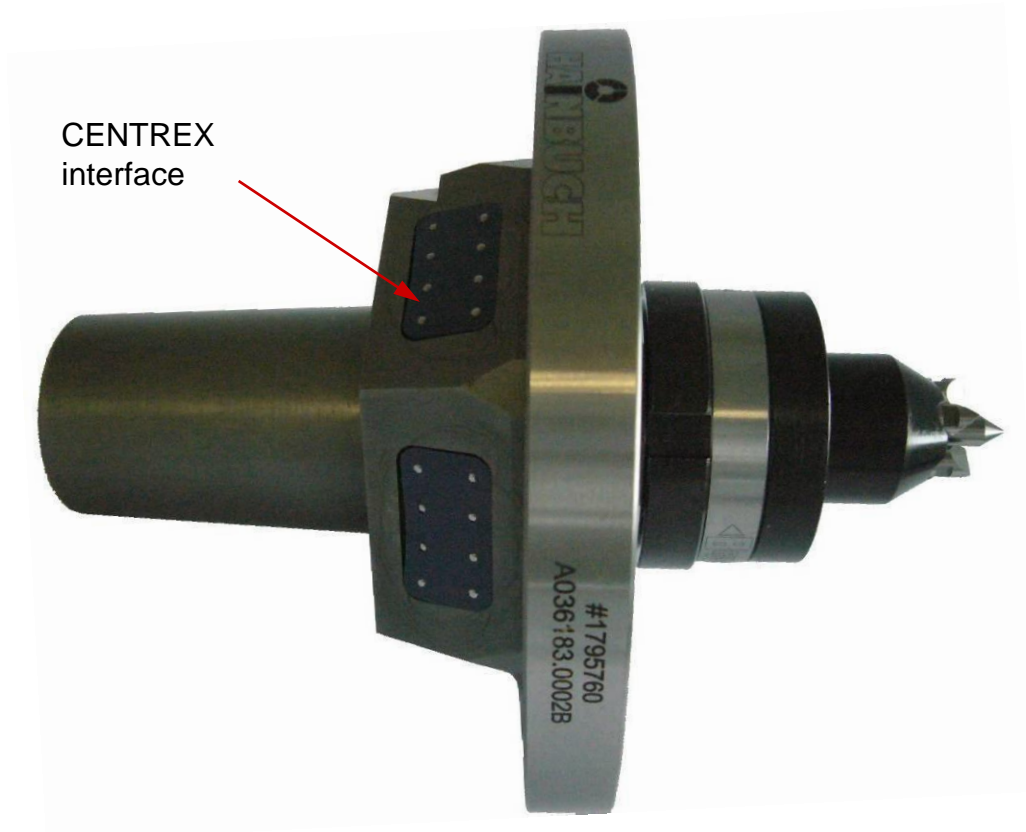
- Driver adaptation for chucks [size 65]
- No alignment necessary



Adaptions for chucks

Maximum flexibility – short change-over time

- For round or hex shaped clamping element receptions
- Fits SPANNTOP nova or TOPlus chucks



And what can we do for you?