

CHUCKS

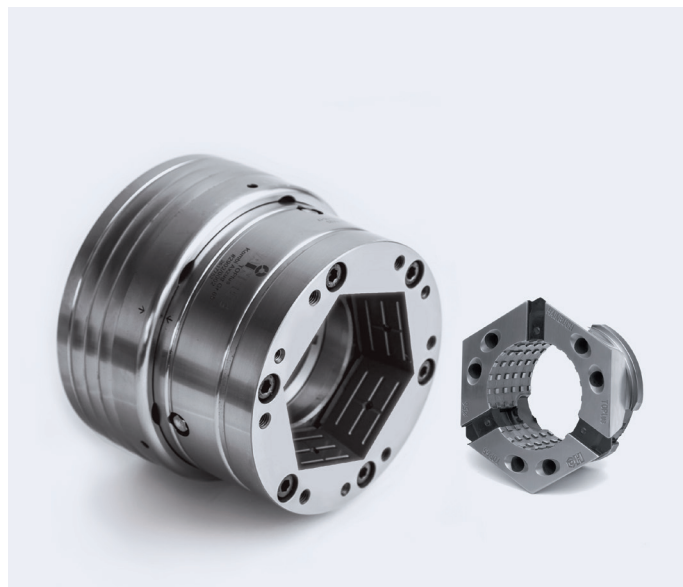
TOPlus Combi pull-back

Chucks with hexagonal clamping geometry

Size 52, 65, 100
Clamping range 3–100 mm

Advantages

- 25 % higher holding power than SPANNTOP
- Unequalled rigidity due to full-surface contact of the clamping segments
- Superior resistance to contamination because of the clamping head geometry
- Absorbs vibration
- Optimal lubrication thanks to lubricating grooves in the clamping head reception
- Minimal inertia loss compared to 3-jaw chucks
- Workpiece stabilization through axial draw force applied against the workpiece end-stop
- Prepared for inside and front end-stop
- Converts to a fully functional »bar chuck« when the end-stop plate is removed

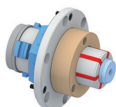


Clamping elements

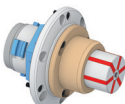


Clamping head SE

Adaptations



MANDO Adapt T211 SE
[Mandrel-in-clamping-device, with draw bolt]



MANDO Adapt T212 SE
[Mandrel-in-clamping-device, without draw bolt]



Jaw module SE
[Adaptation for jaw clamping]



Face driver SE / morse taper adapter SE
[Adaptation for clamping between centers]



Magnet module SE
[Adaptation for magnetic clamping]