

# CHUCKS

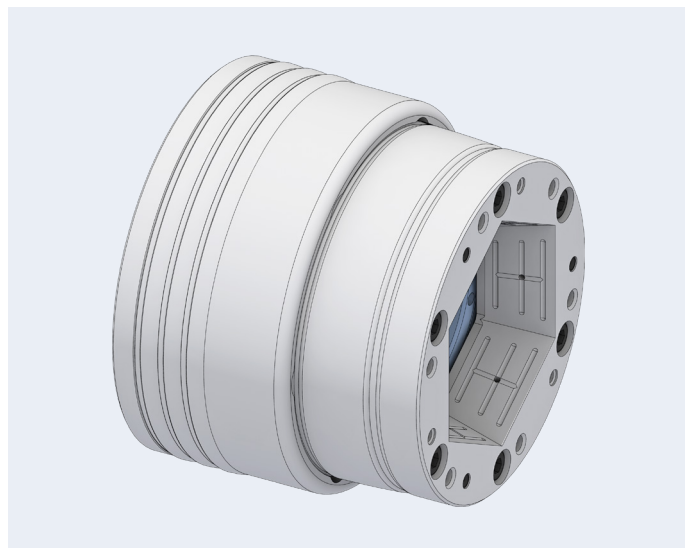
## TOPlus Modular

### Chucks with hexagonal clamping geometry

Size	52, 65, 100
Clamping range	3–100 mm

#### Advantages

- 25 % higher holding power than SPANNTOP
- Unequalled rigidity due to full-surface contact of the clamping segments
- Superior resistance to contamination because of the clamping head geometry
- Absorbs vibration
- Optimal lubrication thanks to lubricating grooves in the clamping head reception
- Minimal inertia loss compared to 3-jaw chucks
- Fully-functional bar chuck
- Due to pull-back effect significantly more rigid clamping is achieved than by conventional collets
- Higher RPM and metal removal rates for bar work

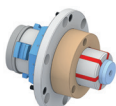


#### Clamping elements

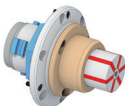


Clamping head SE

#### Adaptations



MANDO Adapt T211 SE  
[Mandrel-in-clamping-device, with draw bolt]



MANDO Adapt T212 SE  
[Mandrel-in-clamping-device, without draw bolt]



Jaw module SE  
[Adaptation for jaw clamping]



Face driver SE / morse taper adapter SE  
[Adaptation for clamping between centers]



Magnet module SE  
[Adaptation for magnetic clamping]