

CHUCKS

TOPlus mini pull-back

Chucks with hexagonal clamping geometry and reduced interference contour

Size 26, 40, 52, 65, 100
Clamping range 3–100 mm

Advantages

- Significantly reduced interference contour
- 25 % higher holding power than SPANNTOP
- Improved tool accessibility
- Ideal for limited installation space
- Lower mass
- Minimal inertia loss compared to 3-jaw chucks
- Adaptation devices possible [modular system]
- Workpiece stabilization through axial draw force applied against the workpiece end-stop
- Prepared for inside and front end-stop
- Converts to a fully functional »bar chuck« when the end-stop plate is removed

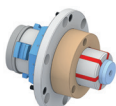


Clamping elements

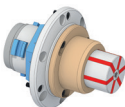


Clamping head SE

Adaptations



MANDO Adapt T211 SE
[Mandrel-in-clamping-device, with draw bolt]



MANDO Adapt T212 SE
[Mandrel-in-clamping-device, without draw bolt]



Jaw module SE
[Adaptation for jaw clamping]



Face driver SE / morse taper adapter SE
[Adaptation for clamping between centers]



Magnet module SE
[Adaptation for magnetic clamping]