

# CHUCKS

## SPANNTOP nova Modular

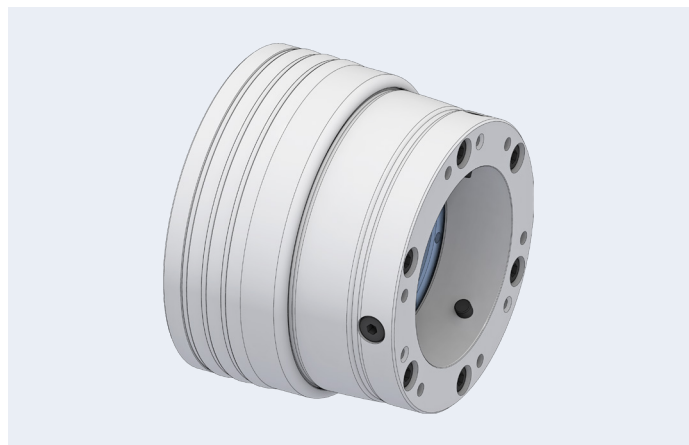


### Chucks with the »classic« round clamping geometry

Size 32, 42, 52, 65, 80, 100, 125  
Clamping range 3–125 mm

#### Advantages

- Ideal for customers with existing RD clamping heads
- Typical features of all HAINBUCH power chucks, such as high holding power, parallel clamping with high accuracy and easy set-up
- Minimal inertia loss compared to 3-jaw chucks
- Fully-functional bar chuck
- Due to pull-back effect significantly more rigid clamping is achieved than by conventional collets
- Higher RPM and metal removal rates for bar work

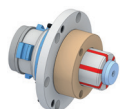


#### Clamping elements

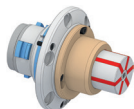


Clamping head RD

#### Adaptations



MANDO Adapt T211 RD  
[Mandrel-in-clamping-device, with draw bolt]



MANDO Adapt T212 RD  
[Mandrel-in-clamping-device, without draw bolt]



Jaw module RD  
[Adaptation for jaw clamping]



Face driver RD / morse taper adapter RD  
[Adaptation for clamping between centers]



Magnet module RD  
[Adaptation for magnetic clamping]