

STATIONARY CLAMPING DEVICES

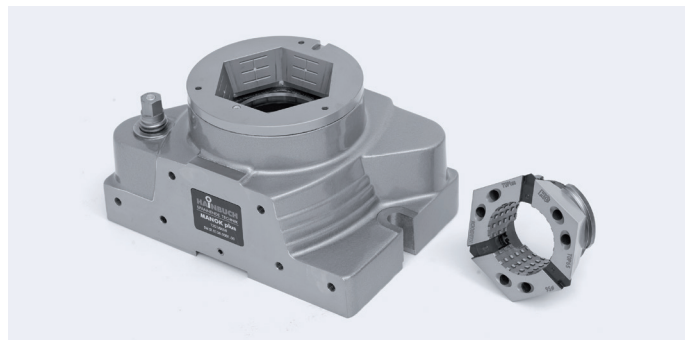
MANOK plus

Manual actuation stationary chuck hexagonal or round clamping geometry

Size 65
Clamping range 3–65 mm

Advantages

- Sensitive manual clamping is possible
- Workpiece stabilization through axial draw force applied against the workpiece end-stop
- Ideal for 5-sided machining
- Adaptation devices possible [modular system]
- Lateral set-up on optional baseplate is possible



Clamping elements

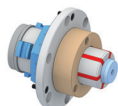


Clamping head SE

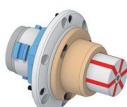


Clamping head RD

Adaptations



MANDO Adapt T211 SE / RD
[Mandrel-in-clamping-device, with draw bolt]



MANDO Adapt T212 SE / RD
[Mandrel-in-clamping-device, without draw bolt]



Jaw module SE / RD
[Adaptation for jaw clamping]



Magnet module SE / RD
[Adaptation for magnetic clamping]