

ADAPTATION CLAMPING DEVICES

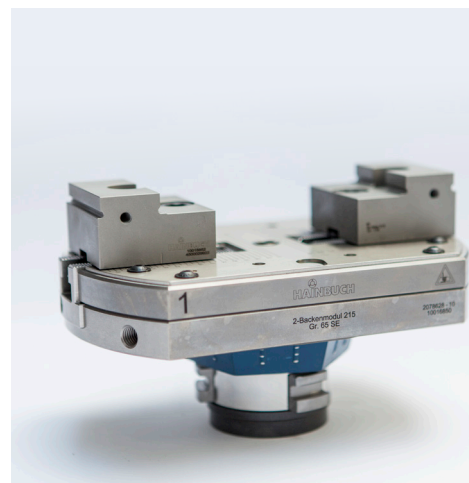
2-jaw module

Adaptation for changing from O.D. clamping to jaw clamping

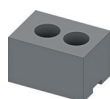
Size	215
Clamping range	15–209 mm
Suitable for the following basic clamping device sizes	65, 80, 100

Advantages

- Jaw clamping in the HAINBUCH chuck or stationary chuck
- Extremely fast conversion from O.D. to I.D. without detachment of the base clamping device [2 min.]
- Self-centering on the basic clamping device
- Enlarged clamping range of the basic clamping device
- Deadlength clamping without pull-back effect
- Optimal lubrication and resistant to contamination thanks to the lubricating system
- Can also be used rotating up to 1,500 rpm
- Handy and lightweight compared to centric clamping vises
- Clamping repeatability ≤ 0.010 for hard reversible stepped jaws



Clamping elements



Jaws

Suitable for



TOPlus mini pull-back /
SPANNTOP mini pull-back



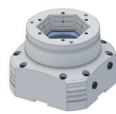
TOPlus Combi pull-back /
SPANNTOP nova Combi pull-back



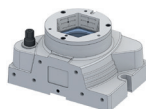
TOPlus Modular /
SPANNTOP nova Modular



TOROK SE / TOROK RD



HYDROK SE / RD



MANOK plus SE / RD