

ADAPTATION CLAMPING DEVICES

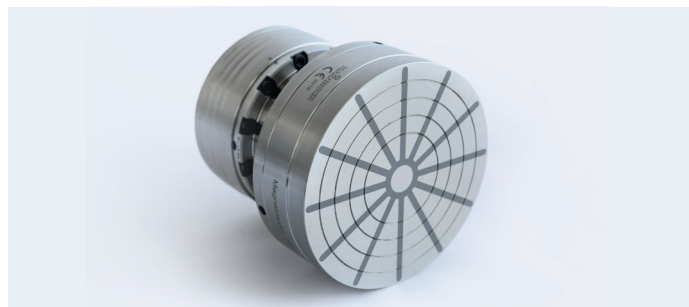
Magnet module

Adaption for changing from O.D. clamping to magnetic clamping

Suitable for the following
basic clamping device sizes 52, 65, 80, 100

Advantages

- End face axial clamping via neodymium magnet
- High face-run change-over accuracy
- High holding force of 140 N/cm²
- Assembly in 30 seconds without having to align
- Low maintenance because it is resistant to contamination



Suitable for



TOPlus mini pull-back / SPANNTOP mini pull-back



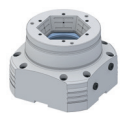
TOPlus Combi pull-back / SPANNTOP nova Combi pull-back



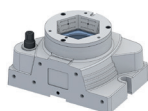
TOPlus Modular / SPANNTOP nova Modular



TOROK SE / TOROK RD



HYDROK SE / RD



MANOK plus SE / RD