

Quick guide

Changing fixture

EN

Contents

1	General.....	4
1.1	Information about this manual.....	4
1.2	Key to symbols.....	4
1.3	Limitation of liability.....	5
1.4	Warranty terms	5
2	Safety	6
2.1	Responsibility of the operator.....	6
2.2	Intended use	6
2.3	Particular hazards	7
3	Use.....	7
4	Use.....	8
4.1	Use-related safety.....	8
4.2	Preparation of the machine for installation	8
4.3	Installation of the clamping element.....	8
4.3.1	Handle actuation variant MQ	9
4.3.2	MQQ handle actuation variant.....	10
4.3.3	Wheel actuation.....	11
4.4	Preparing the machine for removal	12
4.5	Removal of the clamping element.....	12
4.5.1	Handle actuation variant MQ	13
4.5.2	MQQ handle actuation variant.....	14
4.5.3	Wheel actuation.....	15

1 General

1.1 Information about this manual

This manual enables you to work safely and efficiently with the product.

This manual is part of the product and must be kept in a location directly beside the product that is accessible to the personnel at all times. The personnel must have read this manual carefully and understood its contents before starting any work.

Illustrations in this manual are there to facilitate a basic understanding, and may differ from the actual design configuration of the product.



WARNING

Serious injuries caused by individual products or by inappropriate combinations of them!

- Read and pay attention to all operating instructions for individual products and combinations of them.

1.2 Key to symbols

Safety instructions in this manual are designated by symbols. The safety notices are invoked by signal words that express the level of hazard involved.

Always comply with safety notices and exercise caution to avoid accidents, injury to people and damage to materials.

Safety notices



WARNING

... indicates a potentially hazardous situation that can lead to death or serious injury if not avoided.



CAUTION

... indicates a potentially hazardous situation that can lead to moderate or slight injuries if not avoided.

Tips and recommendations



... refers to other documents relating to personal and general safety.

Warning symbols may appear on the product or its components.

Always pay attention to warning symbols, and exercise caution to avoid accidents, injury to people and damage to materials.



... warns of stored energy [for example involving springs].



... warns of hand injuries.



... draws attention to the fact that the operating instructions of the product must be read.

1.3 Limitation of liability

The manufacturer accepts no liability for damage arising from any of the following:

- Non-compliance with this manual
- Unintended use
- Use of untrained personnel
- Autonomous conversion work
- Technical modifications
- Use of non-approved spare parts
- Use of non-approved accessories

Subject to any commitments agreed to in the supplier contract, the General Terms & Conditions of Business and the delivery terms of the manufacturer and all legislative stipulations valid at the time of conclusion of this contract.

1.4 Warranty terms

The warranty terms are included in the manufacturer's General Terms & Conditions of Business.

2 Safety

2.1 Responsibility of the operator

The product is used in the commercial and industrial sector. The operator of the product is therefore governed by the provisions of Health & Safety at Work legislation.

As well as the safety notices in this manual, the area of use of the product must also comply with locally applicable safety, accident prevention and environmental protection specifications as well as those in the manual for the machine tool.

No modifications must be made to the product. The operator is wholly and solely responsible for any resultant personal injury and/or damage to materials.

2.2 Intended use

The changing fixture is intended for the installation / removal of clamping elements. It must not remain in the machine tool but must instead be removed before the start of machining.

Spindle rotation on the machine is prohibited while a changing fixture is attached.

The product is only intended for the type of use described in this manual [see »Use« chapter]. Furthermore, an extended form of use can be agreed contractually between manufacturer and operator.



WARNING

Serious injuries caused by misuse of the product!

- Do not leave the changing fixture in the working area of the machine during machining operations.
- Never start rotating the machine spindle while a changing fixture is attached.
- Only use for the type of use indicated [see »Use« chapter].
- Only use with compatible clamping elements.

Claims of all kinds will be rejected that are due to unintended use.

Here are some examples of unintended use of the product

- If the product is used on non-intended clamping elements.

2.3 Particular hazards

The following section names residual risks resulting from the installation of the clamping element in a product with a changing fixture. In all cases, the residual risks detected during a risk assessment of the machine tool need to be named by the operator.

Pay attention to the safety instructions named here, as well as the warning notices in other chapters of these operating instructions to reduce the risk of health hazards and to prevent dangerous situations.

Improper use



WARNING

Serious injuries caused by a damaged changing fixture!

- A damaged changing fixture must be removed immediately to prevent further use [see »Fault table« chapter].
- If a changing fixture is damaged, contact the manufacturer immediately.

Stroke



WARNING

Serious crushing injuries caused by the stroke of the product!

- Never reach into an area where moving parts are operating.

3 Use

The product is used exclusively to install and remove HAINBUCH clamping heads in and from corresponding clamping devices.

As well as for its general field of application, this product was designed and developed for use, when necessary, in a specific and documented application [see clamping situation drawing or order confirmation].

Any other fields of application require the explicit approval of the manufacturer.

4 Use

4.1 Use-related safety



CAUTION

Crushing injuries caused by improper fitting of the changing fixture on the clamping head!

- When fitting the changing fixture, never reach into the area of the changing pins.

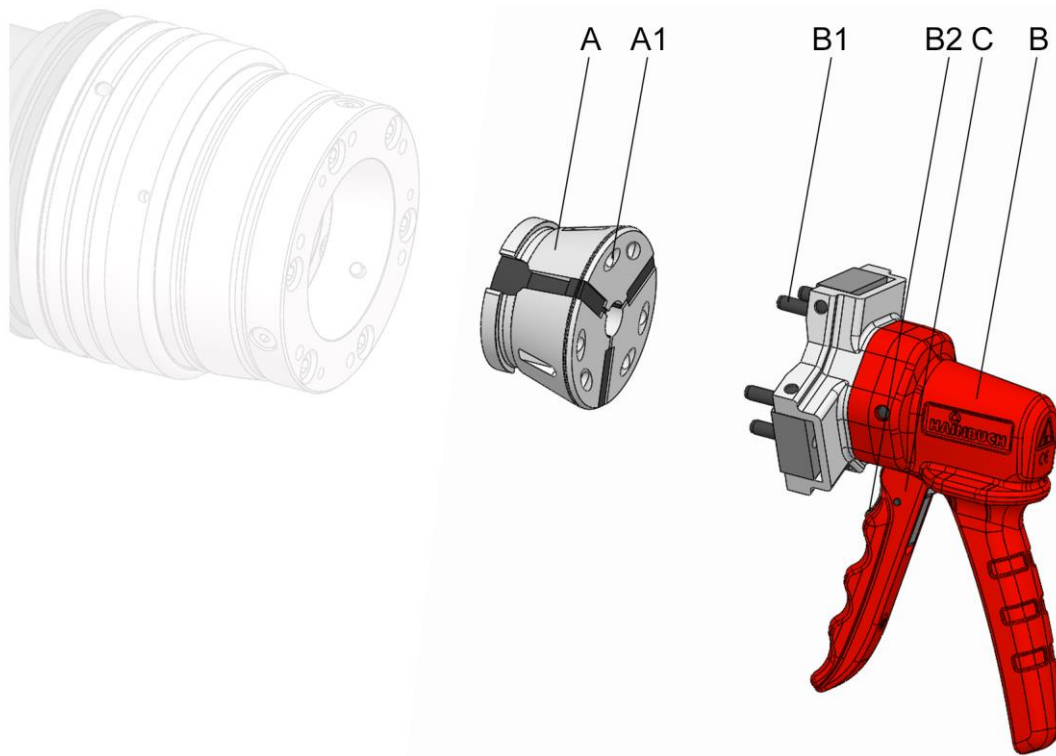


In addition to these operating instructions, also read and follow the operating instructions for the relevant clamping device.

4.2 Preparation of the machine for installation

1. Set the machine into set-up mode.
2. Reduce the operating pressure to a minimum.
3. Remove cutting tools and/or sharp objects from the working area of the machine, or cover them.

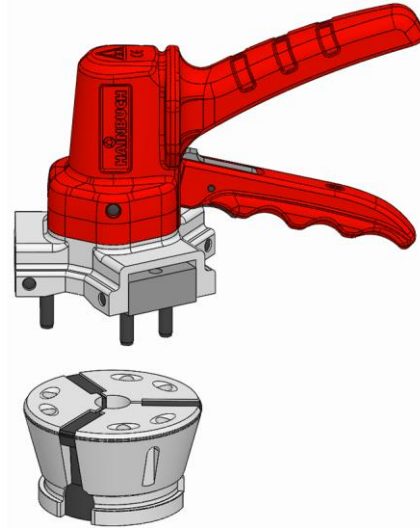
4.3 Installation of the clamping element



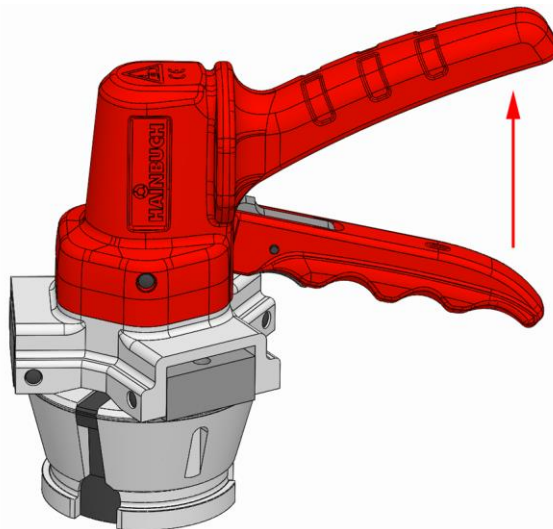
- A Clamping head
- A1 Changing holes in the clamping head
- B Changing fixture for handle or wheel actuation [depending on size]
- B1 Changing fixture pins
- B2 Changing fixture detent lever [handle actuation]
- C Handle or wheel actuation

4.3.1 Handle actuation variant MQ

1. As described in the »Preparation of the machine for installation« chapter, prepare for the following steps.
2. Move the clamping device into release position.



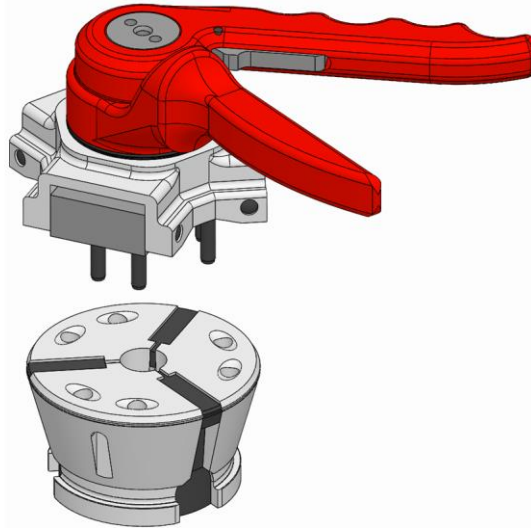
3. Place the flat surface of the clamping head down on a flat and stable base, or place in an appropriate holder, with the changing holes on the clamping head facing upwards.
4. Insert the pins of the changing fixture in the changing holes in the clamping head.



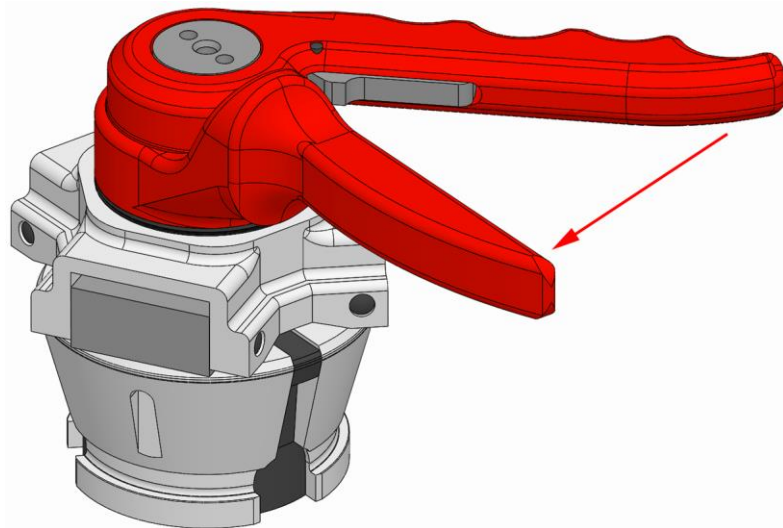
5. Actuate the changing fixture until the handle engages tangibly.
6. Install the clamping head with changing fixture in the clamping device [see »Installation of the clamping element« chapter in the operating instructions for the clamping device].
7. Unfasten and remove the changing fixture by actuating the detent lever.

4.3.2 MQQ handle actuation variant

1. As described in the »Preparation of the machine for installation« chapter, prepare for the following steps.
2. Move the clamping device into release position.



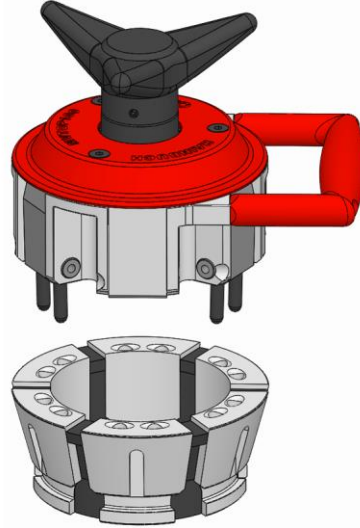
3. Place the flat surface of the clamping head down on a flat and stable base, or place in an appropriate holder, with the changing holes on the clamping head facing upwards.
4. Insert the pins of the changing fixture in the changing holes in the clamping head.



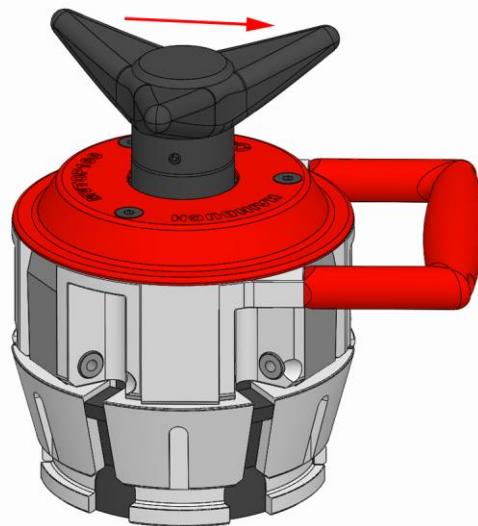
5. Actuate the changing fixture until the handle engages tangibly.
6. Install the clamping head with changing fixture in the clamping device [see »Installation of the clamping element« chapter in the operating instructions for the clamping device].
7. Unfasten and remove the changing fixture by actuating the detent lever.

4.3.3 Wheel actuation

1. As described in the »Preparation of the machine for installation« chapter, prepare for the following steps.
2. Move the clamping device into release position.



3. Place the flat surface of the clamping head down on a flat and stable base, or place in an appropriate holder, with the changing holes on the clamping head facing upwards.
4. Insert the pins of the changing fixture in the changing holes in the clamping head.

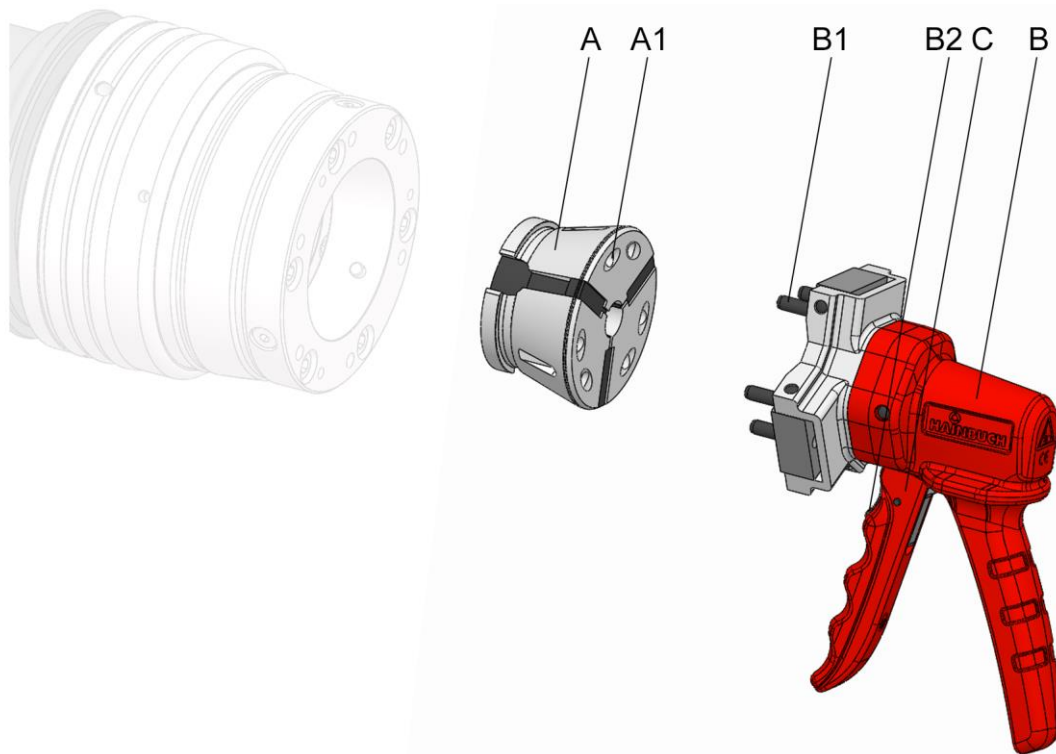


5. Actuate the changing fixture by turning the wheel until firmly home.
6. Install the clamping head with changing fixture in the clamping device [see »Installation of the clamping element« chapter in the operating instructions for the clamping device].
7. Unfasten and remove the changing fixture by turning back the wheel completely.

4.4 Preparing the machine for removal

1. Set the machine into set-up mode.
2. Reduce the operating pressure to a minimum.
3. Remove cutting tools and/or sharp objects from the working area of the machine, or cover them.
4. Remove operating and auxiliary materials as well as remaining processing materials and dispose of them in an environmentally responsible manner.

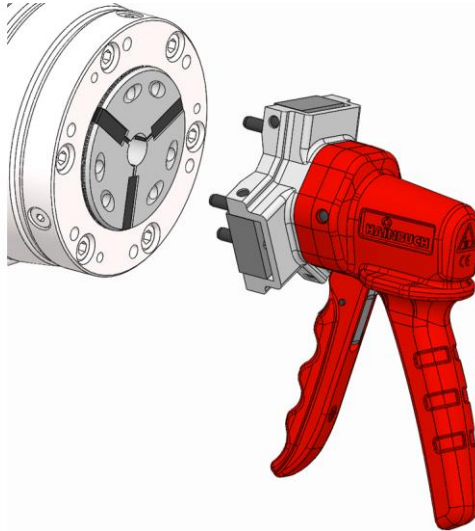
4.5 Removal of the clamping element



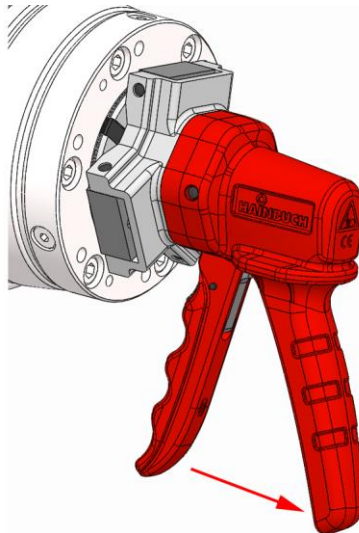
- A Clamping head
- A1 Changing holes in the clamping head
- B Changing fixture for handle or wheel actuation [depending on size]
- B1 Changing fixture pins
- B2 Changing fixture detent lever [handle actuation]
- C Handle or wheel actuation

4.5.1 Handle actuation variant MQ

1. As described in the »Preparing the machine for removal« chapter, prepare for the following steps.
2. Move the clamping device into release position.



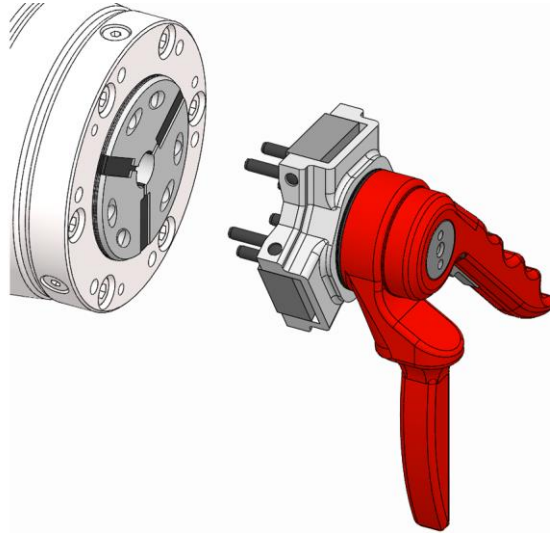
3. Insert the pins of the changing fixture in the changing holes in the clamping head.



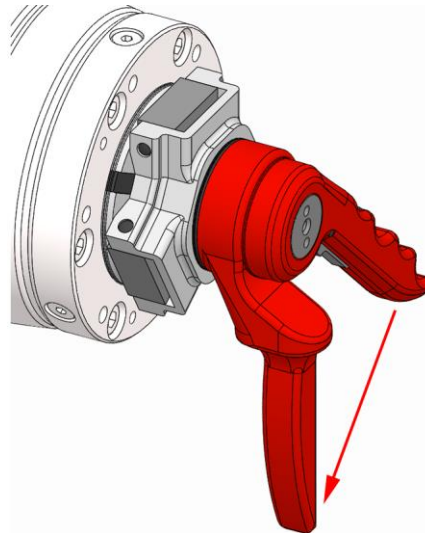
4. Actuate the changing fixture until the handle engages tangibly.
5. Remove the clamping head with changing fixture from the clamping device [see »Removal of the clamping element« chapter in the operating instructions for the clamping device].
6. Place the flat surface of the clamping head down on a flat and stable base, or place in an appropriate holder, with the changing holes on the clamping head facing upwards.
7. Unfasten and remove the changing fixture by actuating the detent lever.

4.5.2 MQQ handle actuation variant

1. As described in the »Preparing the machine for removal« chapter, prepare for the following steps.
2. Move the clamping device into release position.



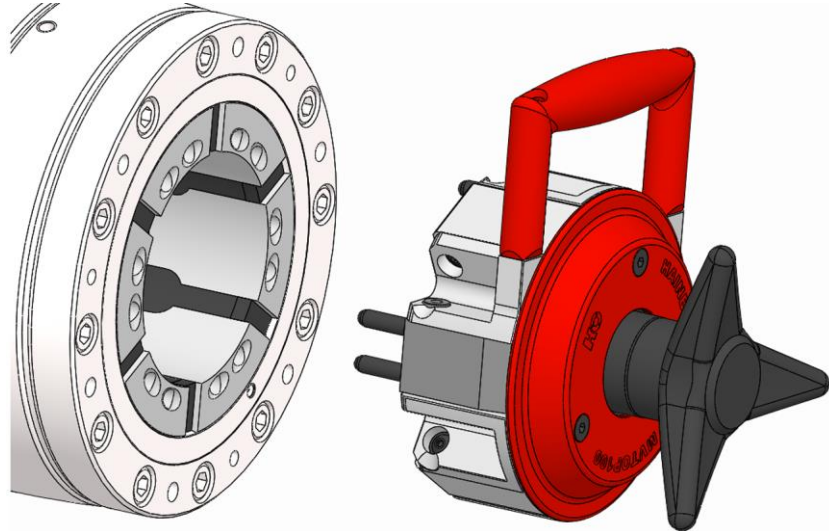
3. Insert the pins of the changing fixture in the changing holes in the clamping head.



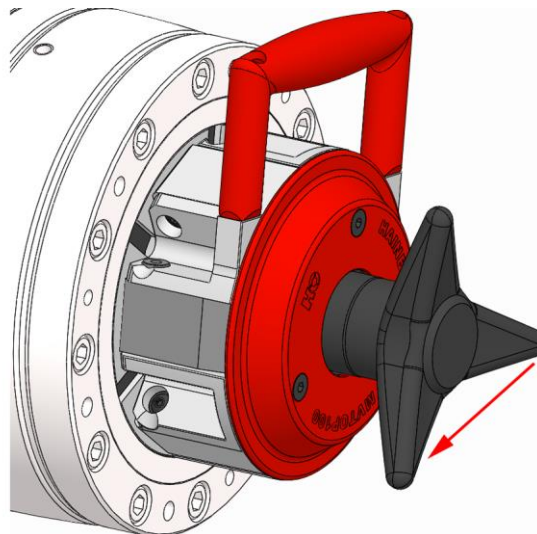
4. Actuate the changing fixture until the handle engages tangibly.
5. Remove the clamping head with changing fixture from the clamping device [see »Removal of the clamping element« chapter in the operating instructions for the clamping device].
6. Place the flat surface of the clamping head down on a flat and stable base, or place in an appropriate holder, with the changing holes on the clamping head facing upwards.
7. Unfasten and remove the changing fixture by actuating the detent lever.

4.5.3 Wheel actuation

1. As described in the »Preparing the machine for removal« chapter, prepare for the following steps.
2. Move the clamping device into release position.



3. Insert the pins of the changing fixture in the changing holes in the clamping head.



4. Actuate the changing fixture by turning the wheel until firmly home.
5. Remove the clamping head with changing fixture from the clamping device [see »Removal of the clamping element« chapter in the operating instructions for the clamping device].
6. Place the flat surface of the clamping head down on a flat and stable base, or place in an appropriate holder, with the changing holes on the clamping head facing upwards.
7. Unfasten and remove the changing fixture by turning back the wheel completely.



HAINBUCH GMBH · SPANNENDE TECHNIK

Postfach 1262 · 71667 Marbach / Erdmannhäuser Strasse 57 · 71672 Marbach · Germany

Tel. +49 7144.907-0 · Fax +49 7144.18826 · verkauf@hainbuch.de · www.hainbuch.com

24 hour emergency phone line + 49 7144.907-444

02.2022 · 010.04/0033 EN · Technical modifications reserved