

CHUCKS

SPANNTOP nova Modular

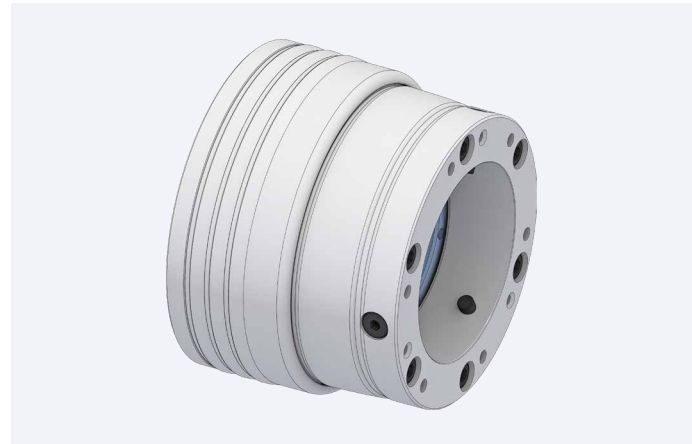


Chucks with the »classic« round clamping geometry

Size 32, 42, 52, 65, 80, 100, 125
Clamping range 3–125 mm

Advantages

- Ideal for customers with existing RD clamping heads
- Typical features of all HAINBUCH power chucks, such as high holding power, parallel clamping with high accuracy and easy set-up
- Minimal inertia loss compared to 3-jaw chucks
- Fully-functional bar chuck
- Due to pull-back effect significantly more rigid clamping is achieved than by conventional collets
- Higher RPM and metal removal rates for bar work



Clamping elements

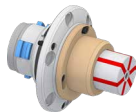


Clamping head RD

Adaptations



MANDO Adapt T211 RD
[Mandrel-in-clamping-device, with draw bolt]



MANDO Adapt T212 RD
[Mandrel-in-clamping-device, without draw bolt]



Jaw module RD
[Adaptation for jaw clamping]



Face driver RD / morse taper adapter RD
[Adaptation for clamping between centers]



Magnet module RD
[Adaptation for magnetic clamping]