

## CHUCKS

### Jaw chuck B-Top

#### Jaw chuck with quick change-over option

Size 165, 215, 260, 315  
Clamping range 25–209 mm

#### Advantages

- Fast jaw change with individual unlocking
- Large through-bore with bushing inserts that can be changed from the front
- Proven wedge rod mechanism



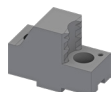
#### Clamping elements



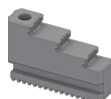
Top jaws, soft



Top jaws, hard



Claw jaws, hard



Profiled stepped jaws, hard