

### Manual actuating unit for MAXXOS and MANDO mandrels

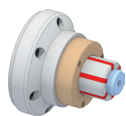
Size XXS-4, 5-7, A-F

#### Advantages

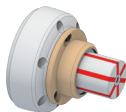
- Mandrels can be used on machining center
- ms dock rotating for lathes without clamping cylinder
- Sensitive manual clamping is possible
- Ideal for 5-sided machining



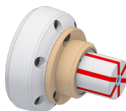
#### Adaptations



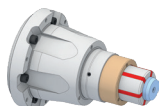
MANDO T211  
[Mandrel with draw bolt]



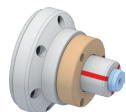
MANDO T212  
[Mandrel without draw bolt]



MANDO T812  
[Deadlength mandrel without draw bolt]



MANDO G211  
[Mandrel for gear cutting, for example with draw bolt]



MAXXOS T211  
[Mandrel for the utmost accuracy, with draw bolt]

# STATIONARY CLAMPING DEVICES

## ms dock rotating

### Manual actuating unit for MAXXOS and MANDO mandrels

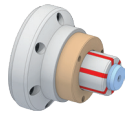
Size XXS-4, A - F

#### Advantages

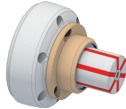
- Mandrels can be used on machining center
- ms dock rotating for lathes without clamping cylinder
- Sensitive manual clamping is possible
- Ideal for 5-sided machining



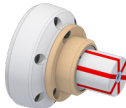
#### Adaptations



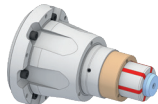
MANDO T211  
[Mandrel with draw bolt]



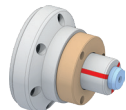
MANDO T212  
[Mandrel without draw bolt]



MANDO T812  
[Deadlength mandrel without draw bolt]



MANDO G211  
[Mandrel for gear cutting, for example with draw bolt]



MAXXOS T211  
[Mandrel for the utmost accuracy, with draw bolt]