

ADAPTATION CLAMPING DEVICES

Face driver

Adaptation for changing over from O.D. clamping to clamping between centers

Suitable for the following
basic clamping device sizes 42, 52, 65, 80, 100

Advantages

- Hard metal face driver
- Tremendous flexibility
- Self-centering of the adaptation in the chuck ≤ 0.003 mm
- Extremely fast conversion without disassembling the chuck [1 min.]
- Spring-loaded center



Suitable for



TOPlus mini pull-back / SPANNTOP mini pull-back



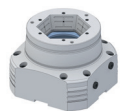
TOPlus Combi pull-back / SPANNTOP nova Combi pull-back



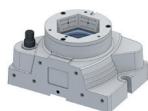
TOPlus Modular / SPANNTOP nova Modular



TOROK SE / TOROK RD



HYDROK SE / RD



MANOK plus SE / RD