

ADAPTATION CLAMPING DEVICES

MANDO Adapt T212

Adaptation for changing over from O.D. clamping to I.D. clamping

Size XXS, XS, S, 0, 1, 2, 3, 4, 5, 6, 7
Clamping range 8–190 mm

Advantages

- Extremely fast conversion without detachment of the basic clamping device [1 – 2 min.]
- Large clamping range and vibration dampening due to vulcanized clamping elements
- Standard segmented clamping bushings and workpiece end-stops for machining to size available
- Workpiece stabilization through axial draw force applied against the workpiece end-stop
- Clamping without draw bolt, consequently ideal for blind bores



Clamping elements



SB segmented clamping bushing

Suitable for



TOPlus mini pull-back / SPANNTOP mini pull-back



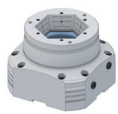
TOPlus Combi pull-back / SPANNTOP nova Combi pull-back



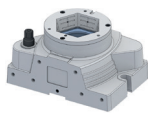
TOPlus Modular / SPANNTOP nova Modular



TOROK SE / TOROK RD



HYDROK SE / RD



MANOK plus SE / RD