

HAINBUCH

The HAINBUCH modular system

Clamping devices **rotating**



TOPlus chuck



TOPlus mini chuck



SPANNTOP nova chuck



SPANNTOP mini chuck



TOROK manual chuck



Clamping devices **stationary**



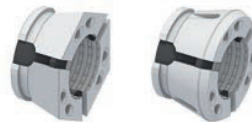
MANOK plus manual stationary chuck



HYDROK hydraulic stationary chuck



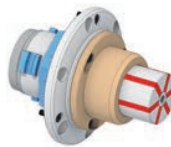
Clamping element



Clamping head – O.D. clamping

- Circumferential clamping
- 3 different versions: for raw material, precise machining, or for in-house machining
- An abundance of profile clamping possibilities
- Coolant-resistant, rubber-metal connection, prevents chips in the chuck
- Clamping range SE \varnothing 3–100 mm, Clamping range RD \varnothing 3–160 mm

Adaptation clamping devices



MANDO Adapt mandrel – I.D. clamping

- Quick change-over from O.D. to I.D. clamping without adjusting due to the CENTREX interface
- Run-out accuracy < 0.005 mm can be achieved between chuck taper and mandrel taper
- Clamping range \varnothing 8–190 mm



Jaw module size 145 or 215 – jaw clamping

- Deadlength 3-jaw clamping
- Can be used rotating [under RPM] and for stationary applications
- Change-over from clamping head or mandrel clamping to jaw clamping in less than 2 minutes



Face driver adaptation

Morse taper adaptation

- Incredible flexibility
- Self-centering of the adaptation in the chuck ≤ 0.003 mm
- Extremely quick change-over without disassembling the chuck [1 min.]



Magnet module

- End face axial clamping via neodymium magnet
- High face-run change-over accuracy
- High holding power of 140 N/cm^2
- Assembly in 1 minute without alignment
- Low-maintenance because it is resistant to contamination



HAINBUCH
The HAINBUCH modular system

Chucks

Mandrels

Stationary clamping devices

Adaptation clamping devices

Measuring technology/ Automation

Quick change-over systems

Special solutions

Clamping elements/ Accessories

Multi spindles

Clamping head change-over [approx. 10 sec.]



Clamping device with clamping head Remove clamping head Clamping device without clamping head Insert clamping head Clamping device set-up

Change-over to mandrel adaptation T211 [approx. 1 min.]



Remove clamping head Insert MANDO Adapt T211 Fit on segmented clamping bushing Screw in draw bolt Clamping device set-up

Change-over to jaw module [approx. 2 min.]



Clamping device with clamping head Remove clamping head Insert jaw module Secure jaw module Clamping device set-up

Change-over to face driver adaptation [approx. 1 min.]



Clamping device with clamping head Remove clamping head Insert face driver Secure face driver Clamping device set-up

Change-over to magnet module [approx. 30 sec.]



Remove clamping head Insert magnet module clamping head Clamping device with clamping head Insert magnet module Clamping device set-up

HAINBUCH

The HAINBUCH modular system

One system, two basic variants, even more possibilities

SE variant [hexagon]

The hexagon TOPlus version offers an additional 25 % increase in holding power relative to the RD variant – due to full-surface contact of the clamping element in the clamping device body.

Additional benefits over the RD variant

- Higher metal removal rates, higher output, lower piece costs
- Vibration dampening effect
- Particularly efficient for difficult machining
- Sealed against contamination from outside – low maintenance, consequently less machine downtime and increased process reliability. Particularly useful for fine-particle non-ferrous metals such as brass or even cast iron. Consequently also particularly well suited for stationary machining.
- Optimal lubrication due to lubricating grooves in the chuck body
- Full through-bore or top face run on the workpiece or front end-stop

For fast identification in the catalogue



The SE variant is indicated by this symbol [in the header]

RD variant [round]

The well-known SPANNTOP version with round clamping geometry in the chuck body and clamping head offers significantly greater holding power than what is offered by traditional 3-jaw chucks or clamping collets, due to the pull-back effect and circumferential clamping.

Your benefits

- High rigidity
- Precise concentricity
- Fast change-over
- Full through-bore or top face run on the workpiece or front end-stop



The RD variant is indicated by this symbol [in the header]

Rotating or stationary – literally all of our clamping devices are available in both variants.



HAINBUCH
The HAINBUCH modular system

SE variant [hexagon]



RD variant [round]



TOPlus mini chuck



SPANNTOP mini chuck



TOPlus chuck



SPANNTOP nova chuck



TOROK manual chuck



MANOK plus manual stationary chuck



HYDROK hydraulic stationary chuck



Clamping elements

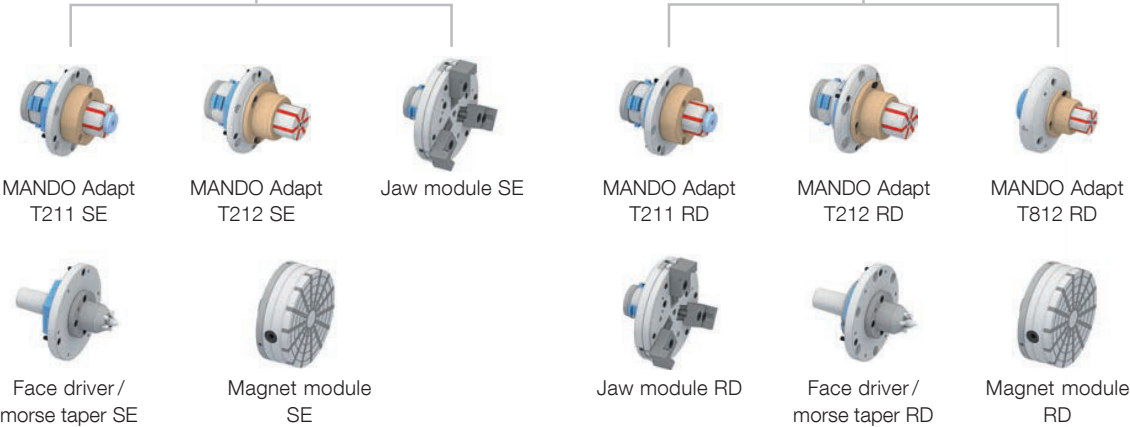
Clamping head SE



Clamping head RD



Adaptations



Chucks

Mandrels

Stationary clamping devices

Adaptation clamping devices

Measuring technology/ Automation

Quick change-over systems

Special solutions

Clamping elements/ Accessories

Multi spindles